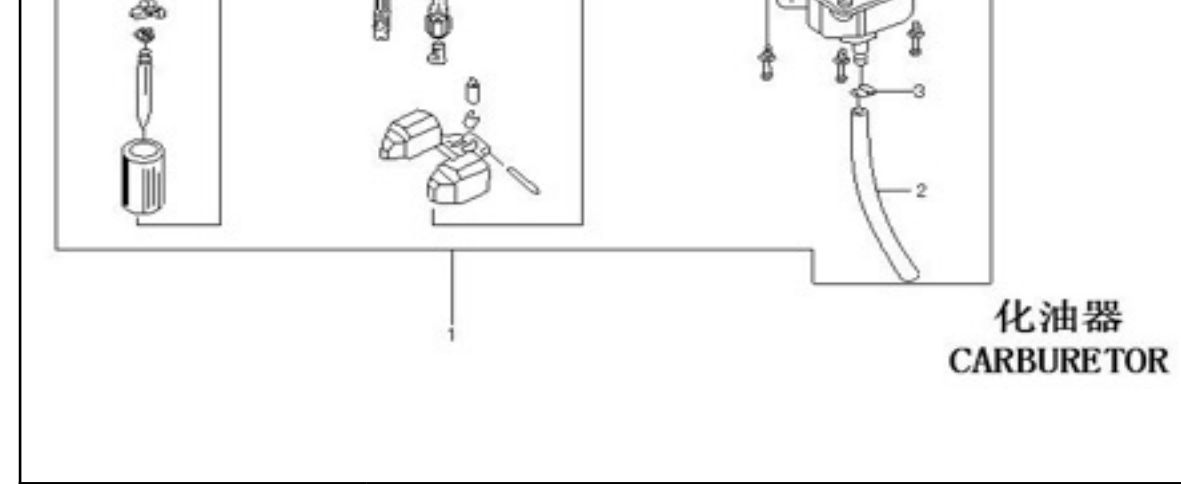


No.	Part No.	Type	English Description
DB25 Spare parts list			
INFORMATION:			
			
1	Notice: Pictures shown are for reference only and does not mean that this photo is exact part, the same photo maybe used in other parts lists, if shows the parts and not the design or specification.		
2	THIS MANUAL JUST FOR YOUR REFERENCE TO ORDER SPARE PARTS FOR THE MODEL OF AQB-21 2011 EDITION		
3	PLS WRITE DOWN THE QUANTITY OF THE PARTS YOU WANT TO ORDER IN THE COLUMN OF "Order qty".		
4	PLS TURN TO THE COLUMN OF "Remark" WHEN YOU THINK IT IS NECESSARY TO KEEP OUR AFTER MARKET OFFICER INFORMED.		
5	IF THE PARTS THAT ARE NOT LISTED, BUT YOU WOULD LIKE TO ORDER, PLS FILL OUT THE PARTS NAME IN THE BOTTOM OF THIS SHEET.		
6	PLS DON'T MAKE ANY CHANGE TO THE ORIGINAL INFO SHOWN IN THIS SHEET!		
7	WE ARE VERY APPRECIATE YOUR ORDERING PARTS WITH THIS SHEET.		
目录 INDEX			
	PAGE	DESCRIPTION	
	1	化油器 CARBURETOR	
	2	电器件 (脚启动) ELECTRIC(Kic-START)	
	3	脚踏操纵件 PEADL CONTROLLER	
	4	手把操纵件 HANDLE CONTROLLER	
	5	空滤器/排气消声器 AIR FILTER/MUFFLER	
	6	油箱/油开关 FUEL TANK/FUEL COCK	
	7	前减震 FR.DAMPER	
	8	车体盖 SEAT/PLASTICS	
	9	车架 FRAME	
	10	前轮/前碟刹 FR.WHEEL/FR.BRAKE ASSY.	
	11	后轮/后碟刹 RR.WHEEL/RR.BRAKE ASSY.	
	12	方向把/方向柱 HANDLE BAR/STEERING STEM	
	13	后叉 RR.SWING ARM	
	14	脚踏/侧支架 FOOT PEG/KICK STAND	



**化油器
CARBURETOR**

序号	件号	规格型号	英文名称
No.	Part No.	Type	English Description
1	1400300010001	PZ19S2-037b	Carburetor

序号	件号	规格型号	英文名称
No.	Part No.	Type	English Description
1	1100300010010	C100全波	RECTIFIER RAQUULATOR
2	1100400010110	21-DY100pb	Coil
3	1100400010110	21-CG125CDI	CDI Unit
4	1100700010010	四线二档(通用)	Key Ignition Switch
5	1100800010001	21-脚-带电门线 地线450	Harness(Kick Start)
6	1100500020001	脚启动-750mm	Stop Switch

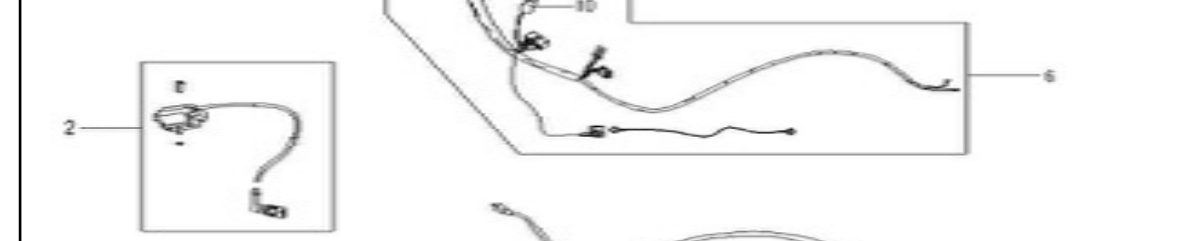
序号	件号	规格型号	英文名称
No.	Part No.	Type	English Description
1	1100300010010	C100全波	RECTIFIER RAQUULATOR
2	1100400010110	21-DY100pb	Coil
3	1100400010110	21-CG125CDI	CDI Unit
4	1100700010010	四线二档(通用)	Key Ignition Switch
5	1100800010001	21V5AH 112*70*106	CABLE.BATTERY
6	1100803070001	21A(电启动)	HARNES
7	1100200010010	通用	STARTER SOLENOID
8	1100500010001	电启动 750mm	START SWITCH ASSY(E-START)
9	1100806020001	通用	CABLE.BATTERY
10	1100807010001	10A	FUSE HOLDER



**电器件
ELECTRIC**

序号	件号	规格型号	英文名称
No.	Part No.	Type	English Description
1	2020701010001	卧式50-140CC	Starter Lever(Steel)
2	2020702010001	卧式50-140CC	Gear Lever
3	0701900230310	21A_铁_新状态	Foot Brake Lever
4	0803202020107	58mm	spring for rear brake lever

序号	件号	规格型号	英文名称
No.	Part No.	Type	English Description
1	0900100070010	APL-II-PPR	GRIP ASSY.
2	1402201010510	21	front brake right grip
3	1400900350001	长600mm_露110mm_配铁	Throttle Cable
4	1402100010001	21(长810mm_外露170mm)	front brake cable
5	07014000100310	21A_铁	bracket of front brake cable
6	0100500010510	APL-L_铝	Throttle Housing



**脚踏操纵件
PEDAL CONTROLLER**

序号	件号	规格型号	英文名称
No.	Part No.	Type	English Description
1	0900100070010	APL-II-PPR	GRIP ASSY.
2	1402201010510	21	front brake right grip
3	1400900350001	长600mm_露110mm_配铁	Throttle Cable
4	1402100010001	21(长810mm_外露170mm)	front brake cable
5	07014000100310	21A_铁	bracket of front brake cable
6	0100500010510	APL-L_铝	Throttle Housing



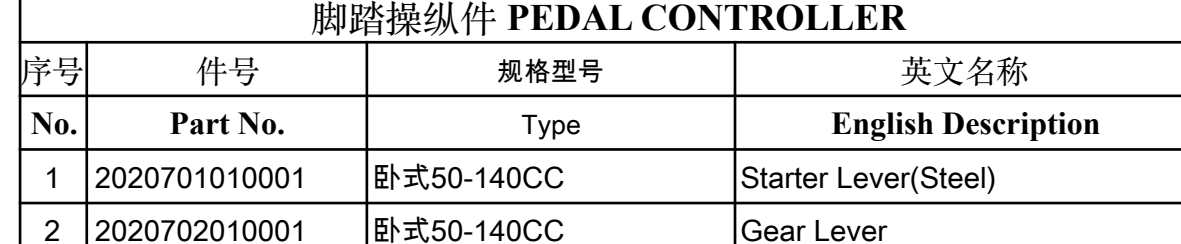
**手把操纵件
HANDLE CONTROLLER**

序号	件号	规格型号	英文名称
No.	Part No.	Type	English Description
1	0700700010201	21A_铁	Exhaust Assy.
2	1401910020001	21系列	The Protector for Exhaust Pipe
3	1500400010010	50.70.110.125.140CC	Exhaust Pipe Seal (Copper)
4	0800501010107	M6X14mm	Triple Clamp Top Nut
5	1400500040001	铁丝网_口径35mm	Air Filter Assembly
6	1400501010101	50.70.110CC	air cleaner hoop



**空滤器/排气消声器
AIR FILTER/MUFFLER**

序号	件号	规格型号	英文名称
No.	Part No.	Type	English Description
1	1001000380010	21款-steel	Fuel Tank
2	1001100150001	通用	Fuel Cap-steel
3	0901000040010	φ4.5X φ10 (1m=0.09公斤)	carburetor hose
6	1001800010001	塑料	Fuel Filter

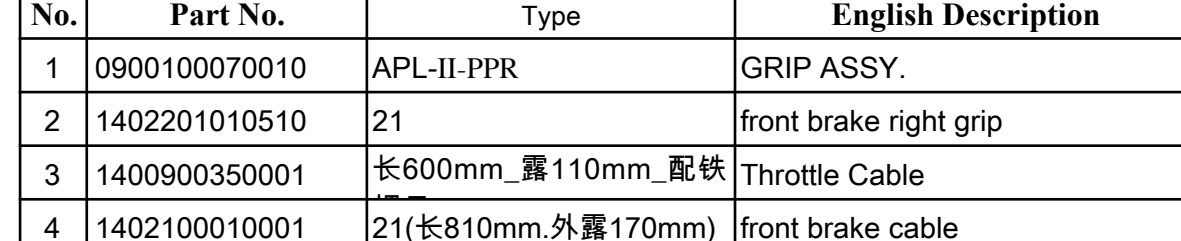


**油箱/油开关
FUEL TANK/FUEL COCK**

序号	件号	规格型号	英文名称
No.	Part No.	Type	English Description
1	1401200010009	21_顶_罩_4.80 m_管	Front Forks(M12Axes)

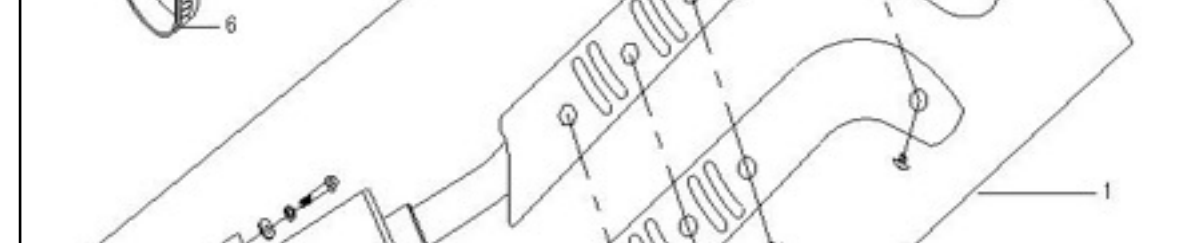


**前减震
FR.DAMPER**



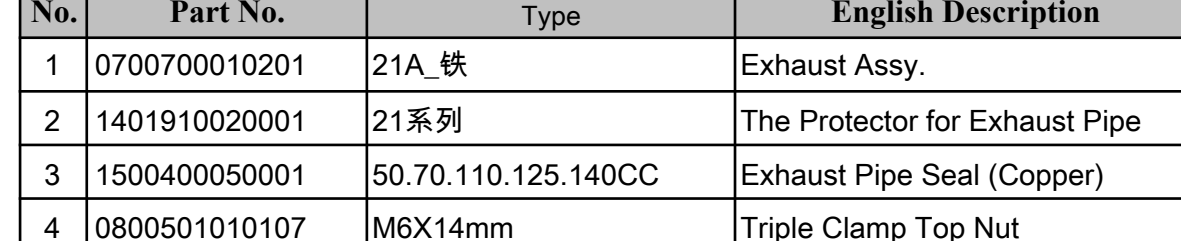
**车体盖
SEAT / PLASTICS**

序号	件号	规格型号	英文名称
No.	Part No.	Type	English Description
1	1000200010002	21	L&R.Plastic For Gas tank
2	1000300010008	21	L.And R.Side Plastic for back
3	1000400010008	21A	Front Number Plate
4	1001200010010	21-弯	Seat
5	1001501010002	21A	Front Fender
6	1000800040002	21A	Rear Fender
7	100250001	21ADEH	PLASTICS (WHOLE SET)
9	1002700010006	21ADEH	Sticker set 513



**前轮/前碟刹
FR.WHEEL / BRAKE ASSY**

序号	件号	规格型号	英文名称
No.	Part No.	Type	English Description
1	0901201010010	2.50-10(振威)	Inner Tire
2	0704802010010	F-M12-1.4X10(毅利)	Rear Wheel Hub(Fe)
3	1806201010101	10*(铁_毅利_老款_含螺母)	The Spoke for Front
4	0901100030010	普胎_2.50-10(振威)	Tyre
5	0901100030010	10"	Tyre protective band
6	0703904100107	φ 12.5X φ 20X18mm	Spacer
7	0703902110107	M12X1.25X200mm_10.9级	FRONT AXLE
8	0803701040107	M12X1.25	RETAINTING NUT
9	1402001010001	21	front hub cover



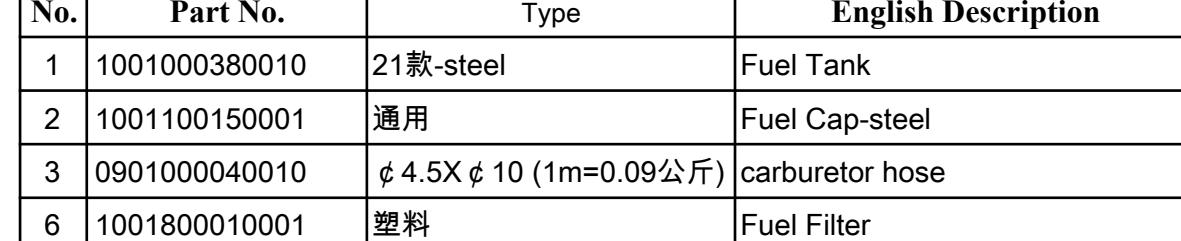
**后轮/后制动器
RR.WHEEL/RR.BRAKE ASSY.**

序号	件号	规格型号	英文名称
No.	Part No.	Type	English Description
1	0901201010010	2.50-10(振威)	Inner Tire
2	0704802010010	F-M12-1.4X10(毅利)	Rear Wheel Hub(Fe) M12
3	1806301010101	10*(铁_毅利_老款_含螺母)	The Spoke for Rear
4	0901100030010	普胎_2.50-10(振威)	Tyre
5	0901100030010	10"	Tyre protective band
6	0703904100107	φ 12.5X φ 20X30mm	Spacer
7	0703902130107	M12X1.25X220mm_10.9级	Front Axle
8	1402002030001	21	rear hub cover
9	1400200301001	21	hub bracket pads
10	0701800010101	420-58X37T_铁	Rear Wheel Sprocket(Fe)
11	0704600030101	21A_铁	REAR BRAKE LEVER



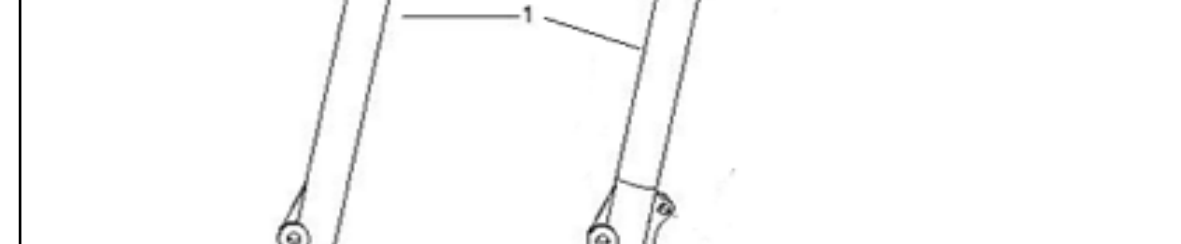
**方向把/方向柱
HANDLE BAR/STEERING STEM**

序号	件号	规格型号	英文名称
No.	Part No.	Type	English Description
1	0702100010201	21A-M22	Steering Stem Nut
2	0804500010001	21系列_34(顶罩+整套)	SIX PARTS ASSY, FOR
3	0700900010410	21-φ 22mm×570mm_铁	Handle Bar with Cross Bar
4	0704101010310	21A_铁	Triple Clamp (Top)
5	0701100010101	M22	Steering Stem Nut
6	1500500090001	21A(φ 11X φ 48X170mm)	Cross Bar Cushion Foam
7	1002016040006	21(170mm×171mm)	Cushion Foam Cover
8	0704102010310	21A_铁_带方向柱	Triple Clamp (Bottom)



**后叉/车架
RR.SWINGARM/FRAME**

序号	件号	规格型号	英文名称
No.	Part No.	Type	English Description
1	0700200010310	21_铁_M12轴孔	Rear Swing Arm
2	0703500010111	21A_铁	Rear Wheel Adjuster
3	0703901110107	M10X1.25X195mm_10.9级	Swing Arm Bolt
4	0820101010001	φ 10.5X φ 30X2	WASHER
5	1002400010001	21A	trigonal piece
6	1401203200010	21-245mm	Rear Shock
7	0700100580310	21A_铁	Frame
8	0701700050001	420-78节	Chain
9	1002300050010	21-全包围型	Chain Guard



**脚踏/侧支架
FOOT PEG / SIDE STAND ASSY.**

序号	件号	规格型号	英文名称
No.	Part No.	Type	English Description
1	0701600010311	180mm(开档6.5)	Kick Stand
2	0804401020107	M10 X 2.5 m m X 1.25 / 台	Kick Stand Bolt
3	0803202010101	115mm	Kick Stand Spring
4	0400200010310	21A_铁	Foot Pegs
5	0710201021501	蹄脚固定销(φ 8X42mm-孔)	pin
6	0700400010310	21A_铁	Foot Peg Support Brackets

序号	件号	规格型号	英文名称
No.	Part No.	Type	English Description
1			
2			
3			
4			
5			
6			

Extra parts order(for the parts not in this list)

序号	件号	规格型号	英文名称
No.	Part No.	Type	English Description
1			
2			
3			
4			
5			
6			